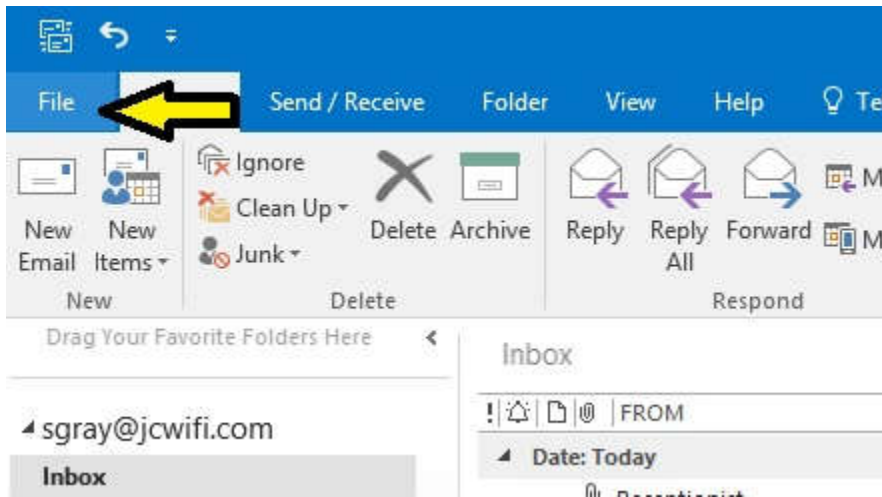
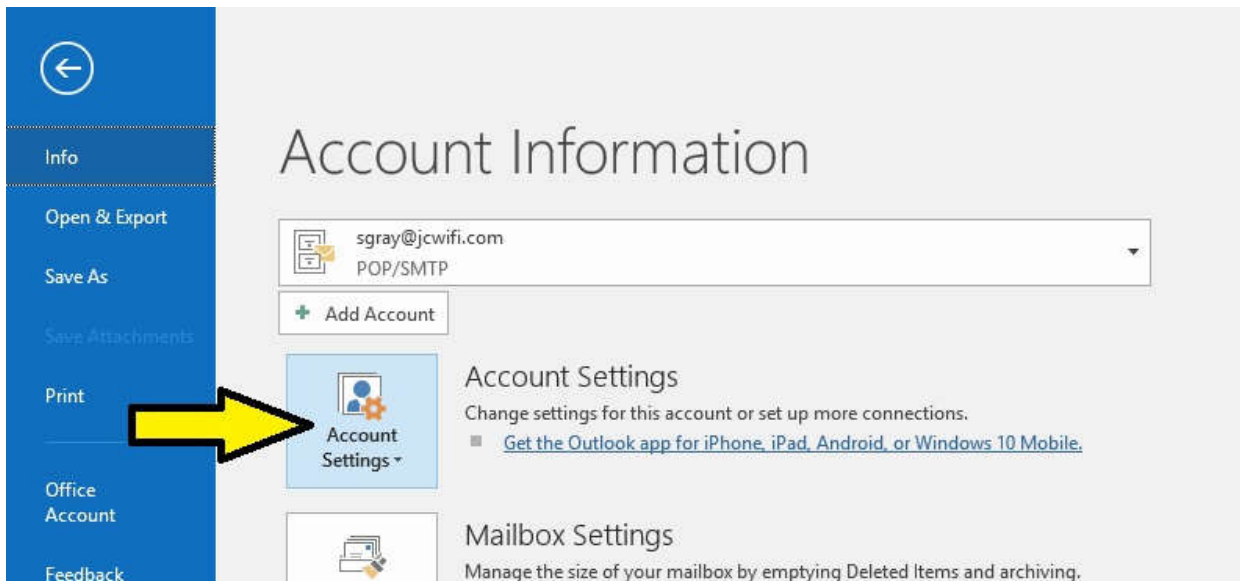


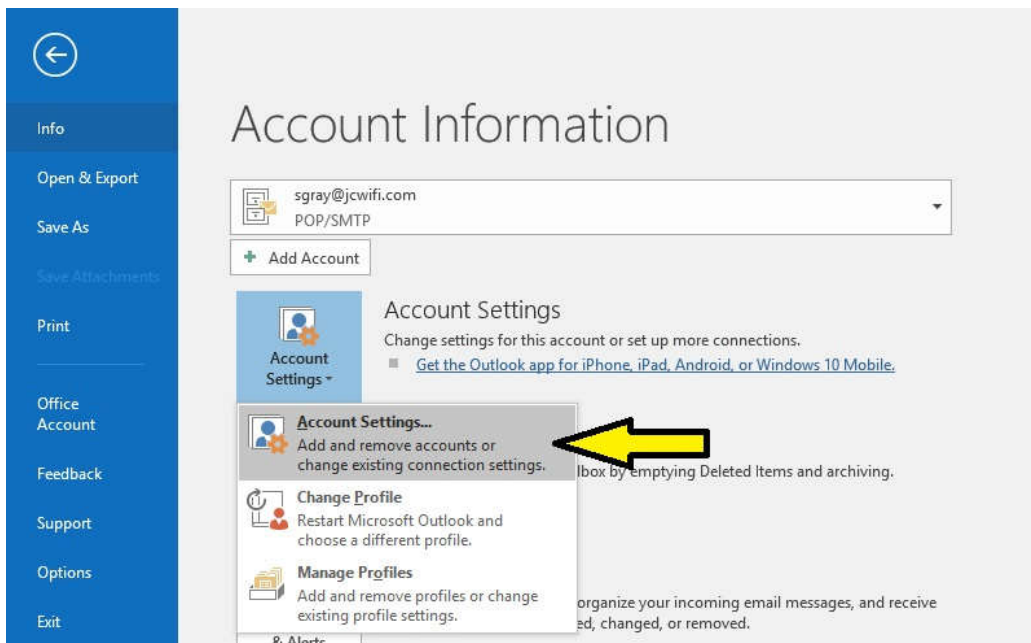
Jcwifi Email Settings Outlook 2016



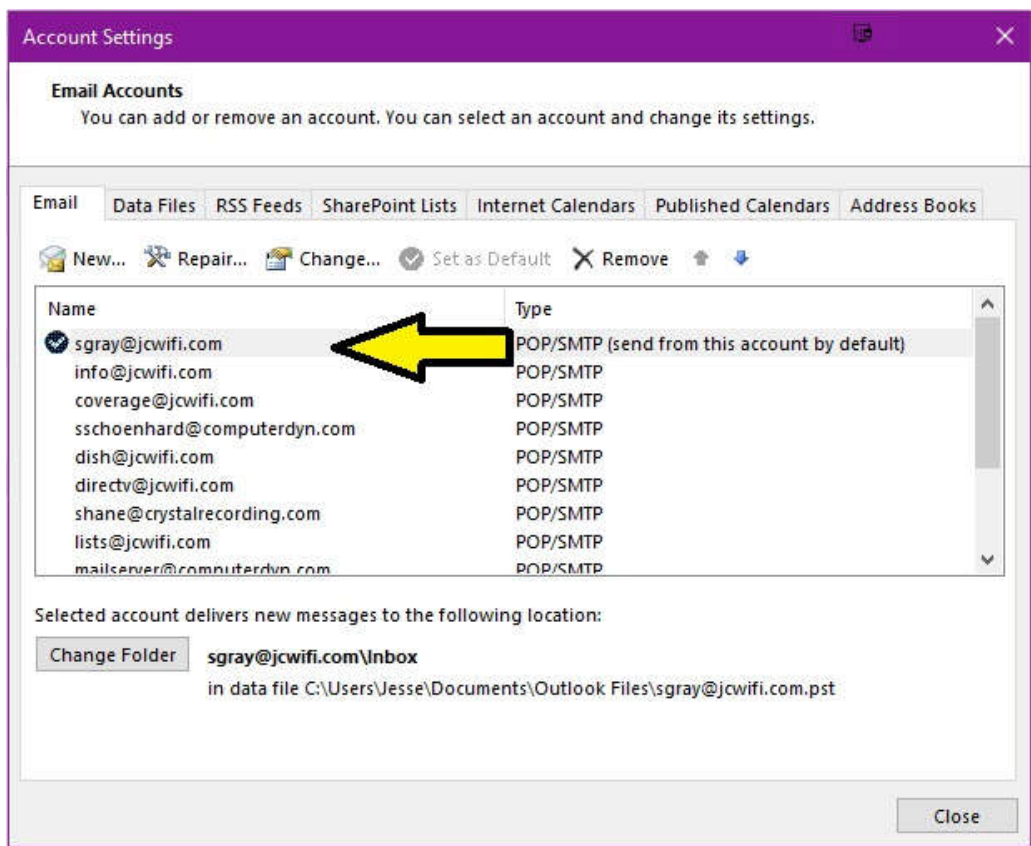
In Outlook, click on File in the top left corner of the window.



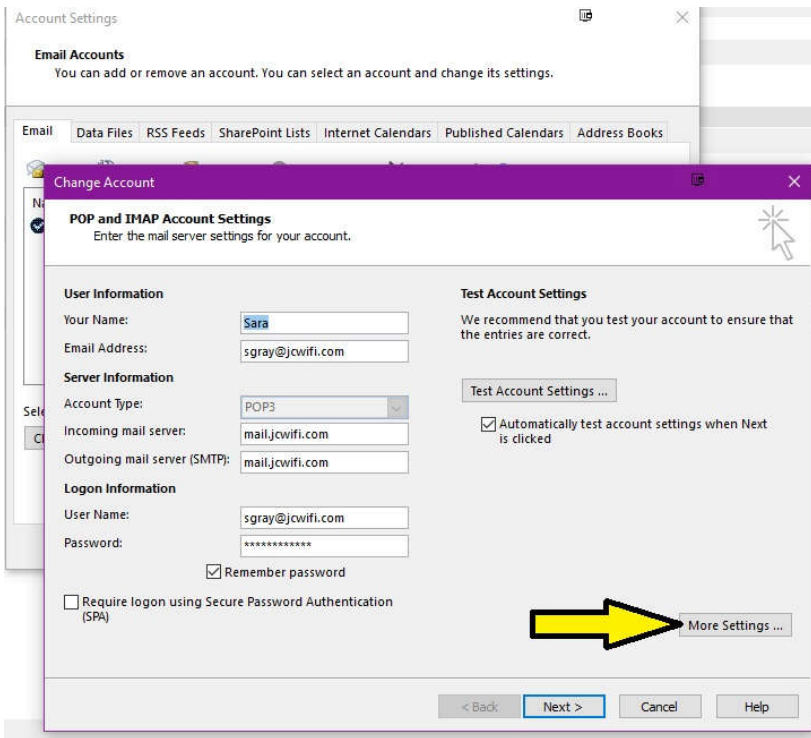
Click on the box that says Account Settings.



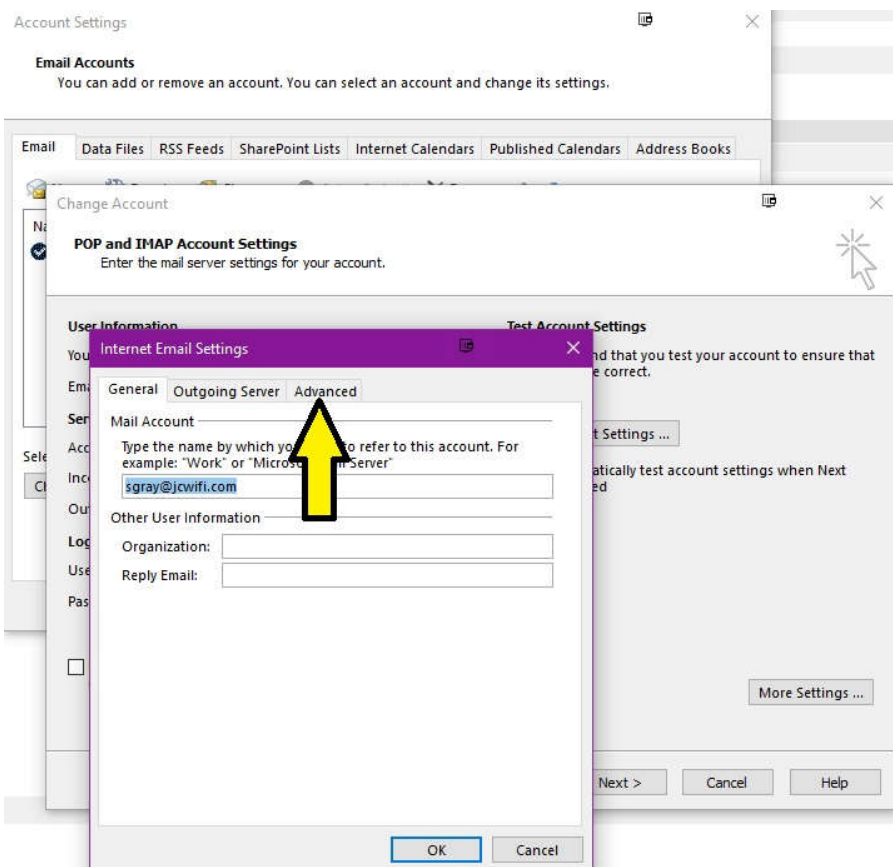
In the drop down, click on Account Settings.



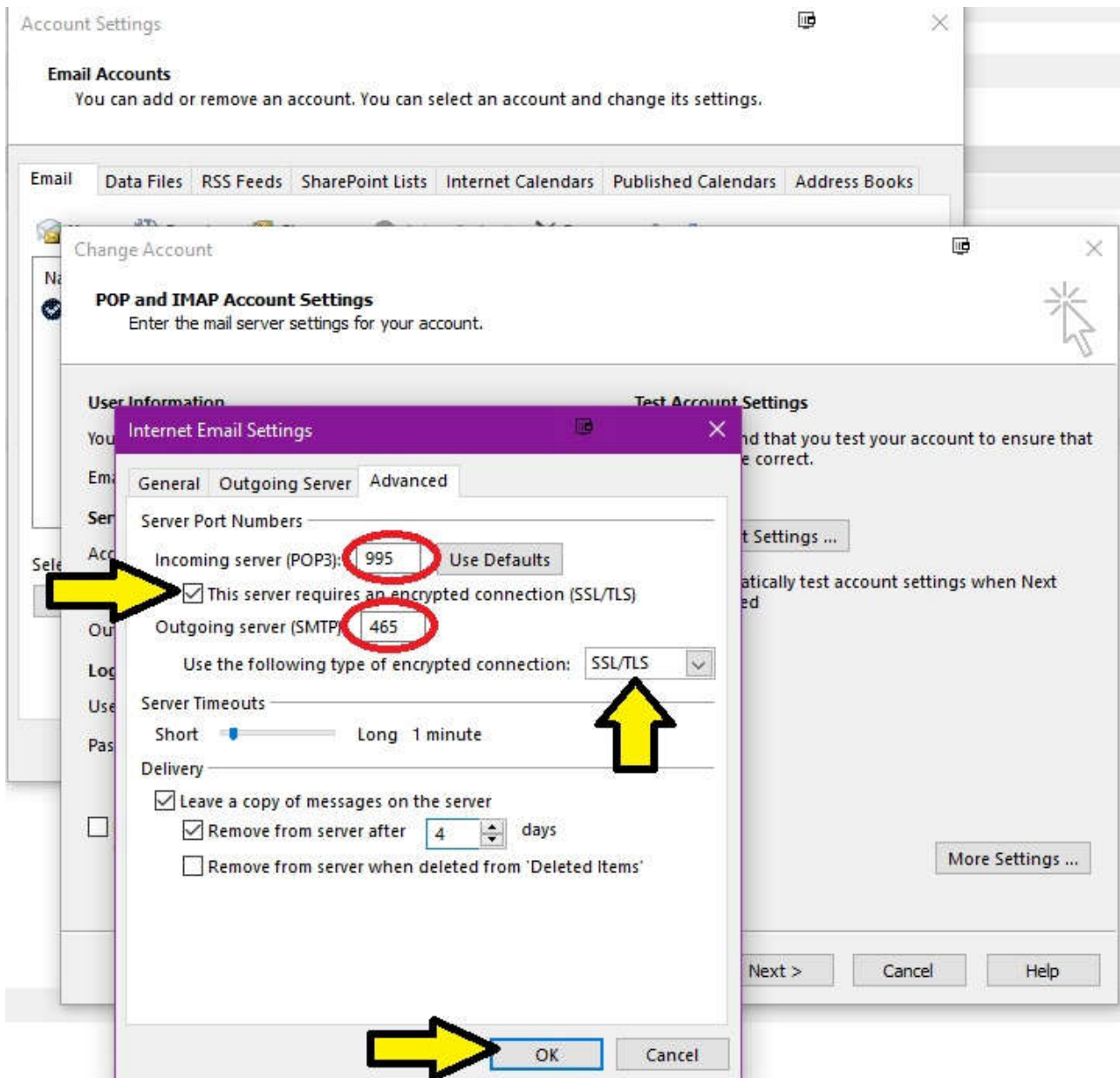
In Account Settings, double click on your email account in the account list.



On the Change Account Screen, click on More Settings, in the bottom right corner.

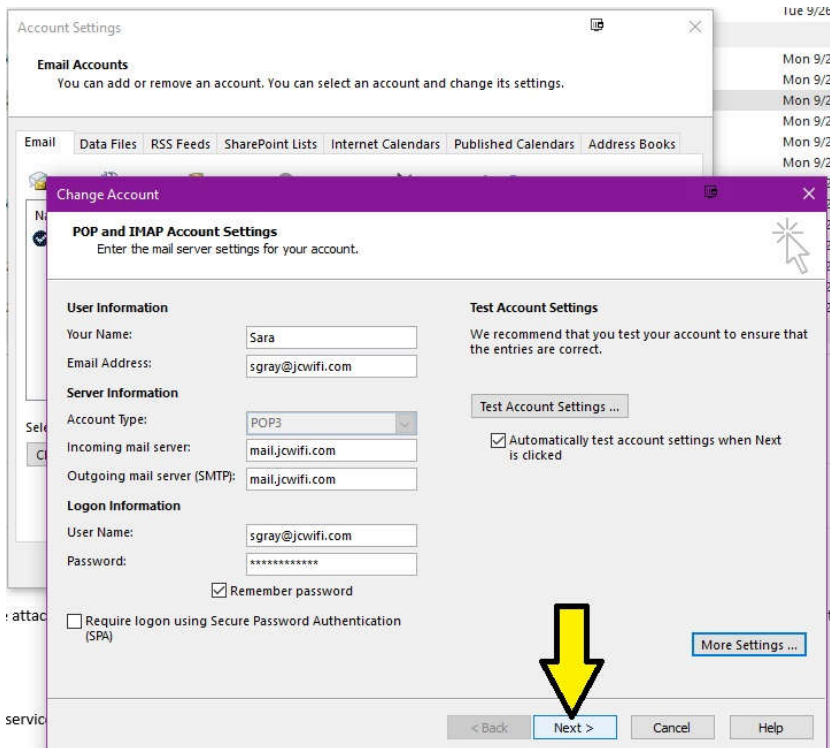


In the Email Settings Window, click on the Advanced tab.

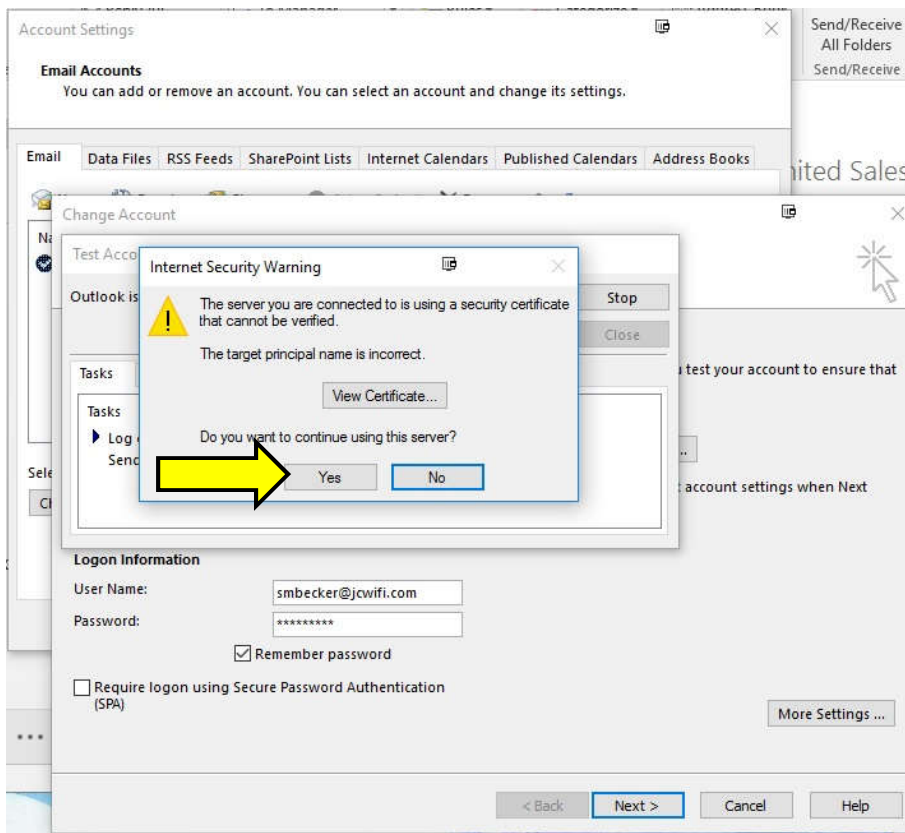


On the Advanced tab, make the following changes.

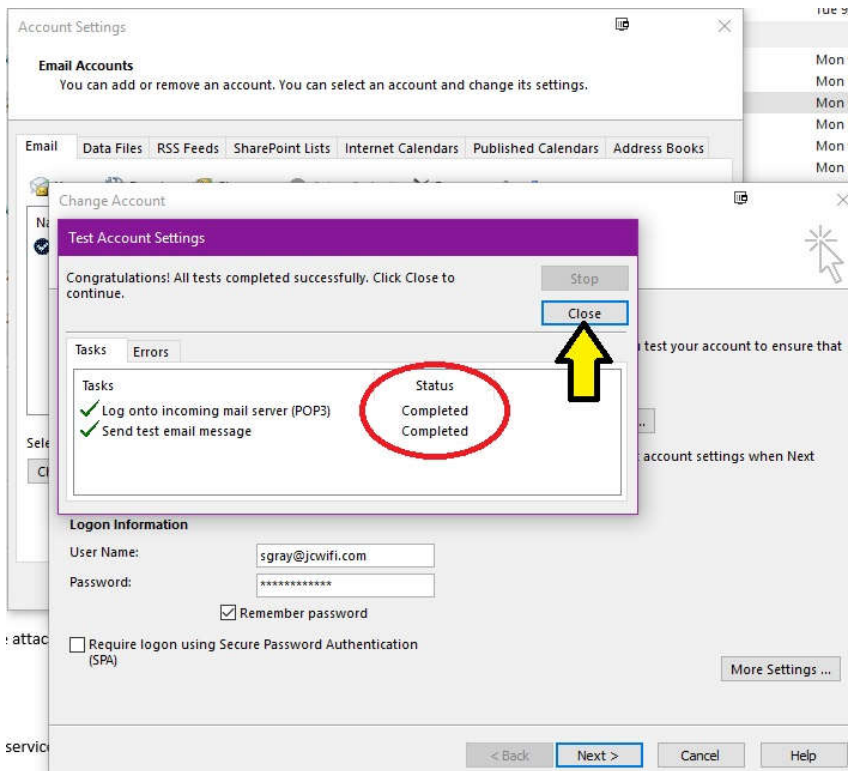
1. Incoming server (POP3) 995
2. Put a check mark in the box next to "This server requires an encrypted connection (SSL/TLS)"
3. Outgoing server (SMTP) 465
4. Select SSL/TLS from the drop down box next to "Use the following type of encryption"
5. Click OK to save changes.



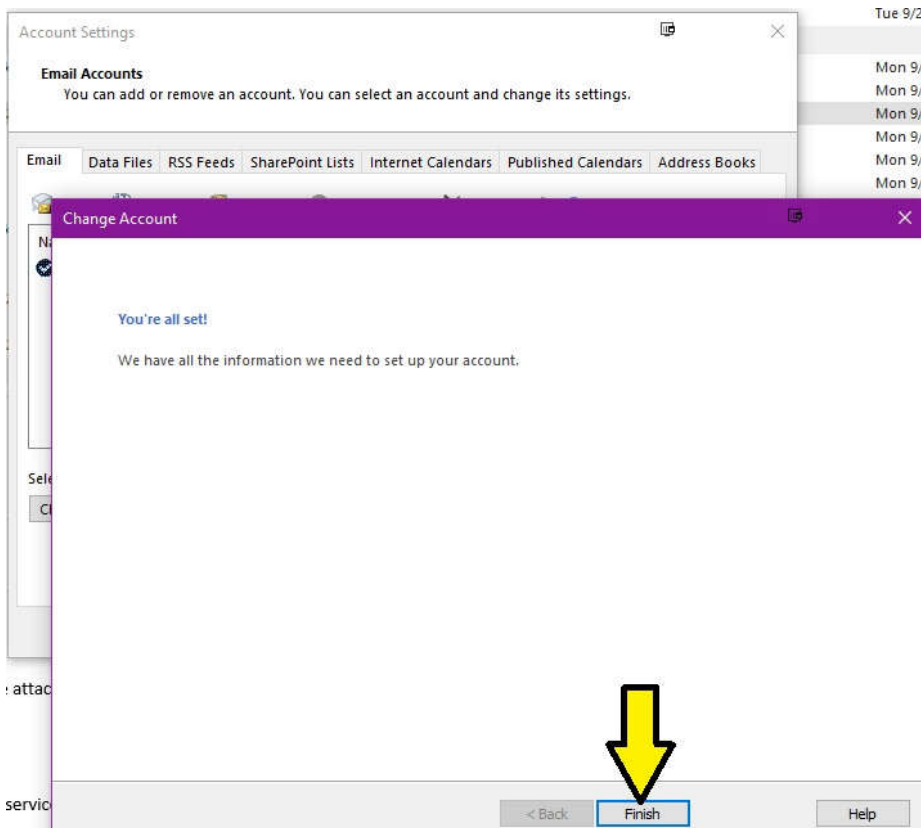
Click on Next.



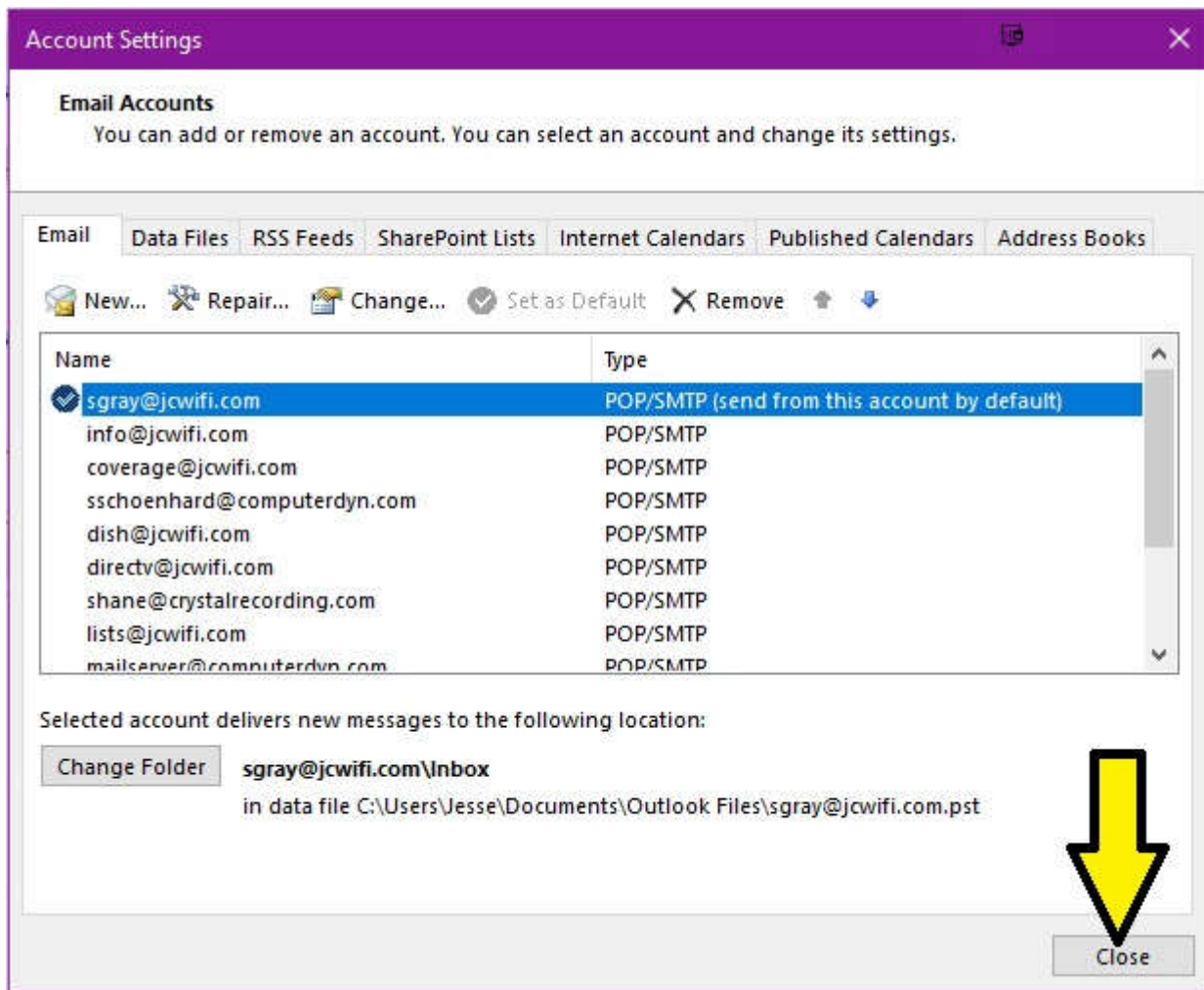
Click **Yes** to continue and accept the certificate.



After the account settings have been tested click **Close**.



Click **Finish**.



Click **Close** to exit the Account Settings window, or choose another account if you have more than one JCWIFI email account to update.