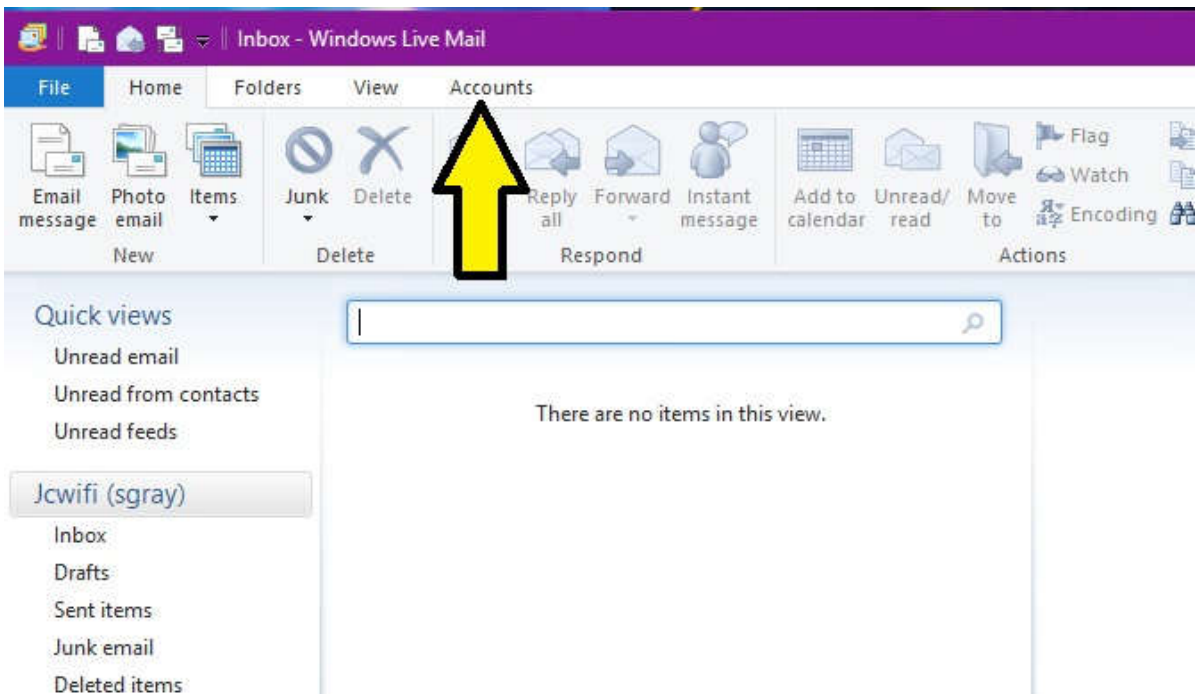
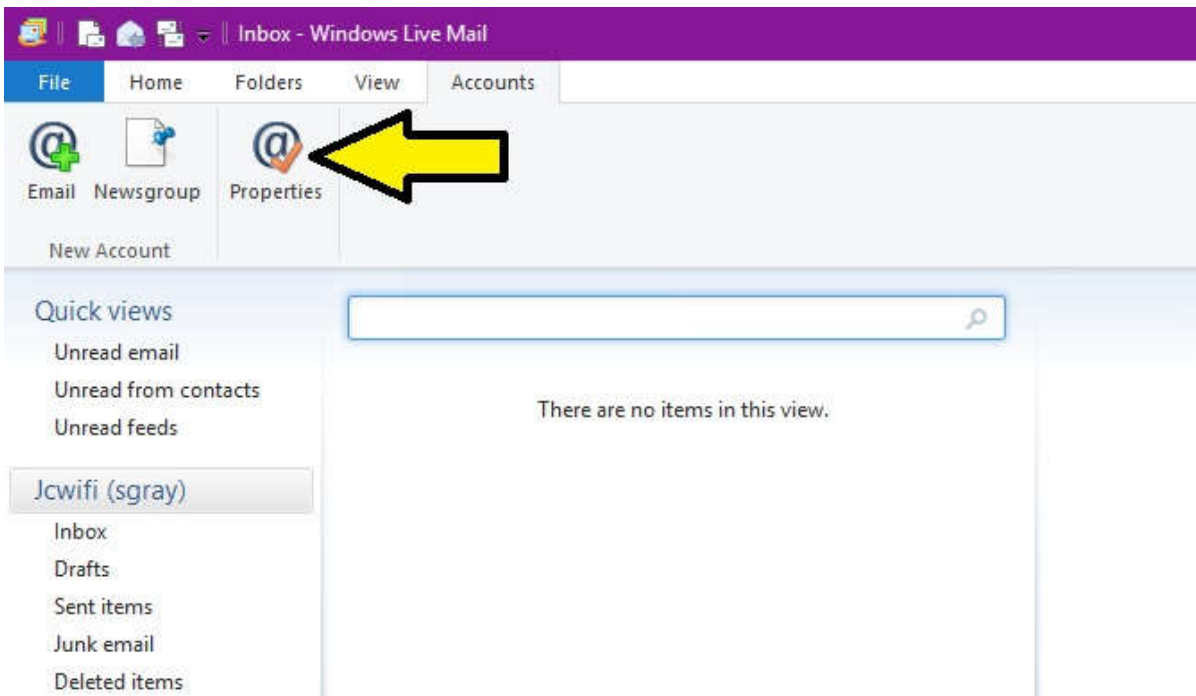


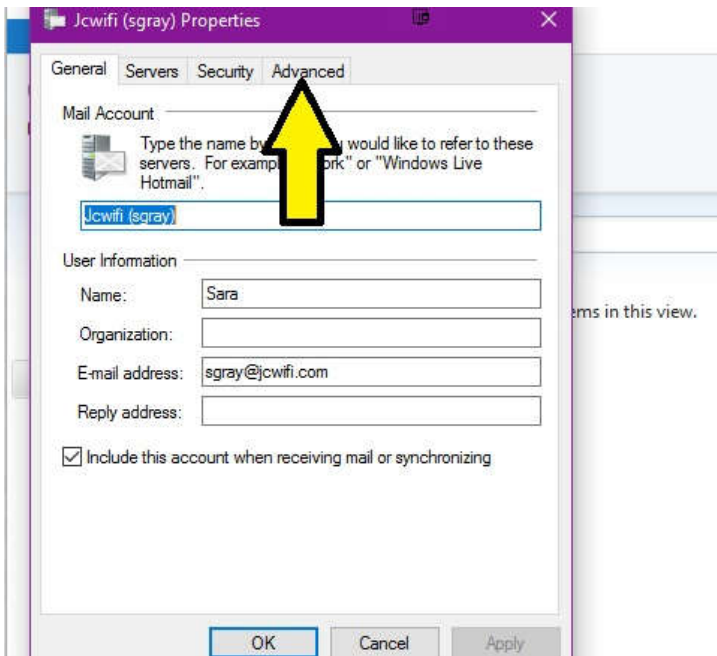
Windows Live Mail Setup



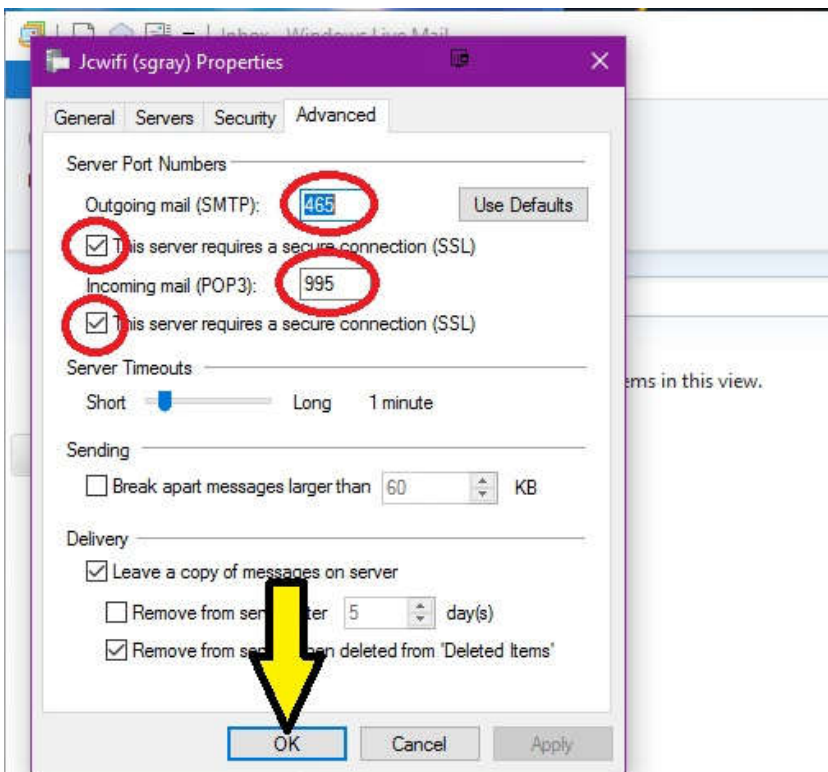
Click on "Accounts" at the top of the screen.



Click on "Properties"



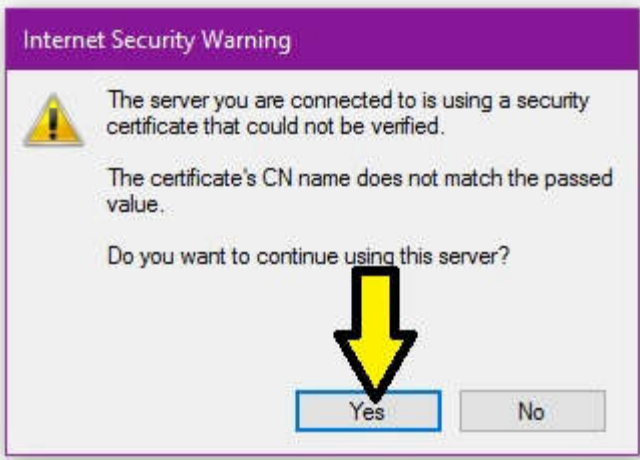
Click on the Advanced tab.



Change the following settings

1. Outgoing mail (SMTP): 465
2. Incoming mail (POP3): 995
3. Put check marks in both boxes next to "This server requires a secure connection (SSL)"

Then click OK.



Click "Yes" to accept the certificate.